

Product outline

Bluedog offers a range of fencing to suit pre-schools, kindergartens and playgrounds where the fencing needs to be child-safe.

The benefits of child-safe playground fencing include:

- Containing children with certainty in an area due to the impenetrable design of the fence.
- Controlling the access and contact of persons from outside the facility with the children.



The main features of Bluedog’s playground fencing include:

- **Child safe tested panels** for rigidity and flex in the uprights to avoid head entrapment.
- **Intimate knowledge** of child-safe fencing guidelines.
- **Heavier range** for applications where there is greater likelihood of vandalism.
- **Standard range** that is a more cost effective and compliant option.
- **Manufactured and powder coated in-house** by Bluedog
- **Aesthetically pleasing** tubular design.

Important aspects of child safe playground fencing include:

- **Picket spacing** such that a child’s head cannot become entrapped between the uprights.
- **Child-safe locking mechanisms** on gates or doors.
- **Self-closing hinges.**
- **Removal of climb points** and **tunnelling points.**

Standard Height: 1200mm, 1500mm and 1800mm

Warranties

Fence fabrication: 3 years

Fence installation: 1 year

Powder-coating: 10 year colour fastness (conditions apply).



Heavier Gauge Playground Fencing

Panel heights	1200, 1500 and 1800mm (standard)
Panel configuration	Vertical pickets are inserted through punched rails with each picket welded at the top and bottom, of both the top and bottom rails.
Pickets	Ø19x1.2mm Circular Hollow Section (CHS) or 25x25x1.2mm Square Hollow Section (SHS)
Picket spacing	Picket spacing is subject to panel height, picket material and site-specific issues. Ordinarily a minimum spacing between pickets of 88mm.
Rails	40x40x1.6mm (SHS). We recommend the bottom rail be positioned at the bottom of the pickets to reduce the likelihood of tunneling under the fence

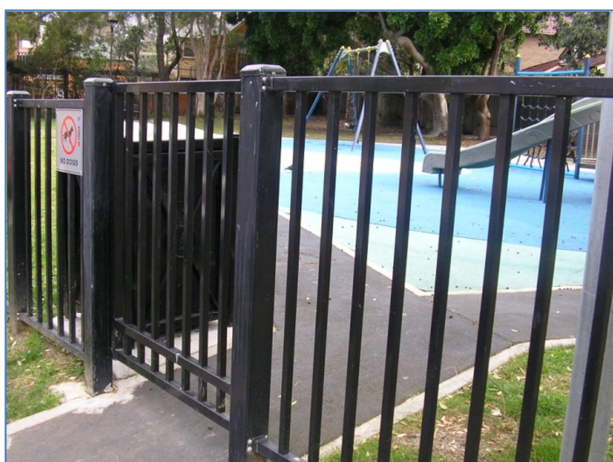
Top profile	Flat top, rod top and loop top* (*Ø19mm round only). However, we recommend against loop top or rod top as this potentially creates a hanging point for a child's head between the pickets protruding above the top rail (subject to picket spacing).
Bottom profile	Bluedog recommends that the bottom rail is affixed at the bottom of the vertical picket, so that it is closer to the ground, and this makes it more difficult for children to get under the fence.
Panel brackets	Shrouds (four per panel). Recommended alternative: 1-piece heavy duty, hot dipped galvanised security bracket (four brackets per panel).
Fasteners	Colour matched tek screw (three screws per shroud). Recommended alternative: Tamper proof Irius screw (three screws per bracket).
Intermediate posts	65x65x1.6mm (SHS). Recommended alternative: 65x65x2.5mm.
Standard gate sizes	Single gate: 1200mm and 1500mm opening Double gates: 3000mm and 4000mm opening
Gate frame	Stiles and Rails 40x40x1.6mm

Standard Playground Fencing

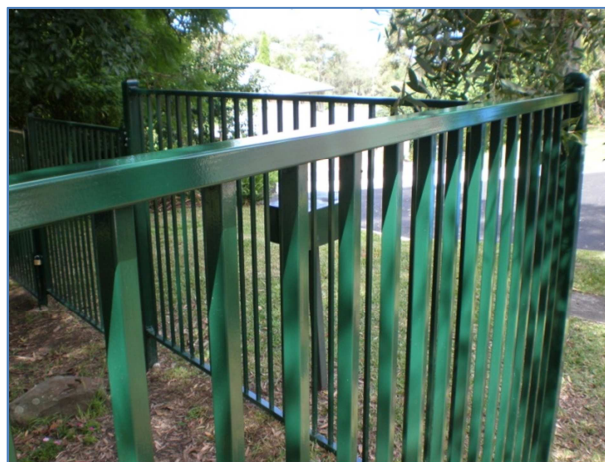
Panel height	1200, 1500 and 1800mm (standard)
Panel configuration	Vertical pickets are inserted through punched rails with each picket welded at the top and bottom, of both the top and bottom rails.
Vertical pickets	Ø16x1.2mm (CHS) and 19x19x1.2mm (SHS)
Vertical spacing	Picket spacing is subject to panel height, picket material and site-specific issues. Ordinarily a minimum spacing between pickets of 88mm.
Rails	38x25x1.6mm SHS
Picket top profile	Flat top, rod top and loop top* (*Ø16mm round only). However, we recommend against loop top or rod top as this creates a hanging point for a child's head between the pickets protruding above the top rail.
Bottom profile	Bluedog recommends that the bottom rail is affixed at the bottom of the vertical picket, so that it is closer to the ground, and this makes it more difficult for children to get under the fence.
Panel brackets	Zinc plated shroud. Four shrouds per panel.
Fasteners	Colour matched tek screw (three screws per shroud).
Intermediate posts	50x50x1.6mm SHS (1800mm long to suit 1200mm high panel) 65x65x1.6mm SHS (2400mm long to suit 1800mm high panel)
Standard gate sizes	Single gate: 1200mm and 1500mm opening Double gates: 3000mm and 4000mm opening
Gate frame	Stiles 40x40x1.6mm; Rails 38x25x1.6mm

General

Gate latching hardware	Select from a Lokk Latch, magnetic latch or D-latch. The magnetic safety latch certified to Australian Standard AS2820
Gate hinging hardware	Self-closing hinges certified to Australian Standard AS2820
Gate posts	65x65x2.5mm SHS Option: 75x75x3mm SHS (length subject to panel height)
Post Footing	Fence posts Ø150mm x 600mm deep using 20mpa concrete Gate posts Ø250mm x 600mm deep using 20mpa concrete These dimensions may vary depending on panel type and soil conditions
Post cap	Plastic or steel* caps (*recommended)
Weld type	All welds are Silicon bronze which has superior corrosion resistance to a standard mild steel weld
Zinc coating	Pre-galvanised precision tube with a zinc coating mass of 275 g/m ² across the internal and external surfaces of the hollow steel tube
Higher corrosion environments	We would recommend the use of our zinc-rich epoxy primer under the top coat to give much greater corrosion resistance



Heavier gauge



Standard gauge



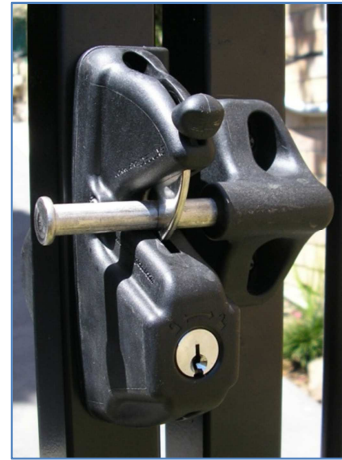
An example of non-conforming playground fencing due to excessive flex in the picket



Preschool fencing



Lokk Latch (External; key lockable)



Lokk Latch (Internal; key lockable)



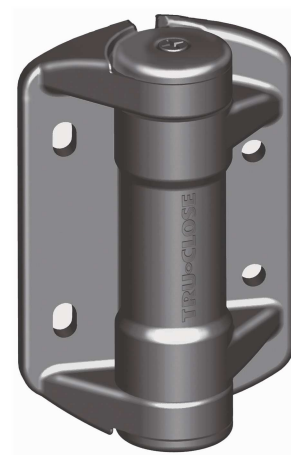
D-Latch (padlockable)



Self-closing hinge (padlockable)



Magnetic Latch (key lockable)



Self-closing hinge