

Product outline

Bluedog offers a style of powder coated metal fencing to suit pool applications where the fencing needs to be pool (child) safe AND act as security fencing.



The benefits of pool security fencing include:

- Controlling the access and contact of persons from outside the pool facility with the children and minors using the pool.
- Preventing children from entering or leaving the pool facility due to the impenetrable design of the fence.
- Reducing unauthorised access to the facility after hours and resulting damage from vandalism.

The main features of Bluedog’s product include:

- **Tighter picket spacing** at 90mm spacing rather than 110mm.
- **Child safe tested panels** and gates for certification to AS 1926 – Appendix A Strength and rigidity for rigidity and flex in the uprights.
- **Intimate knowledge** of pool safe and child-safe fencing guidelines.
- **Aesthetically pleasing** tubular design.

Important aspects of pool-safe security fencing include:

- **Gate locking mechanisms.**
- **Gate hinges.**
- **Removal of climb points, head entrapment points and tunnelling points**

Standard Heights: 1800 and 2100mm

Budget Estimate Rates: Supply and install \$250 per metre (fencing) and \$1,150 per metre (gates), for 2100mm high (rates exclude GST)

Warranties

Fence fabrication: 3 years

Fence installation: 1 year

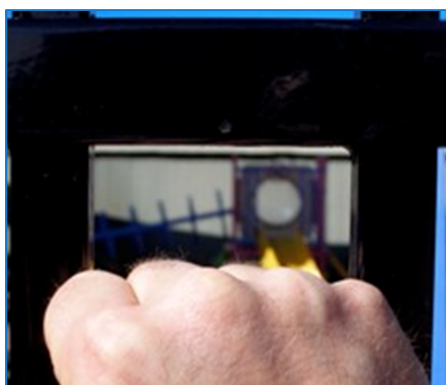
Powder-coating: 10 year on colour fastness (conditions apply).



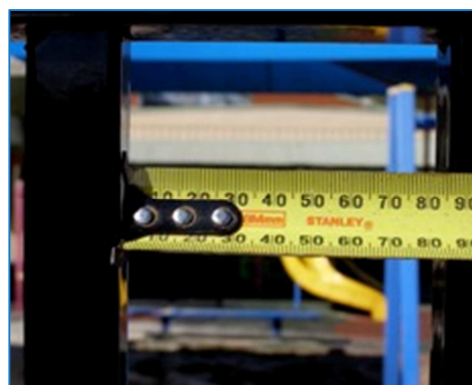
Fence Material Specification

Panel height	1800mm and 2100mm (standard)
Panel configuration	Vertical pickets are inserted through punched rails with each picket welded at the top and bottom, of both the top and bottom rails
Picket profile	25x25x1.2mm Square Hollow Section (SHS)
Picket spacing	115mm centre-to-centre of each vertical picket
Picket top profile	Crimped (sharp or rounded) spear top, Rod (square) top
Rails	40x40x1.6mm (SHS). We recommend the bottom rail be positioned at the bottom

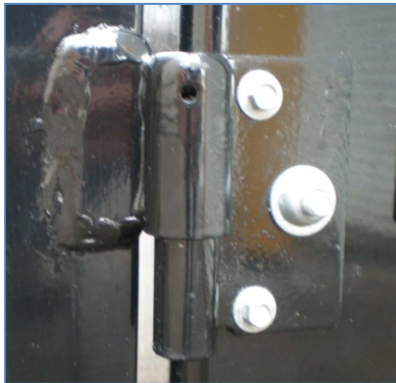
	of the pickets to reduce the likelihood of tunneling under the fence.
Panel brackets	Shrouds (four per panel); or Recommended alternative: 1-piece heavy duty, hot dipped galvanised security bracket (four per panel).
Fasteners	Colour matched Tek screw (three screws per shroud); or Recommended alternative: Tamper proof Irius Tek screw (three screws per bracket).
Intermediate posts	65x65x1.6mm SHS (2700mm for 1800mm high panel). 65x65x1.6mm SHS (3000mm for 2100mm high panel). We recommend a 65x65x2.5mm post (3000mm long) for a 2100mm high panel as there is less flex in the post.
Gate sizes	Single gate: 1200mm and 1500mm (standard). Double gates: 3000mm, 4000mm and 6000mm (standard).
Gate frame	Stiles and Rails 40x40x1.6mm (three horizontal rails) Option: Stiles and Rails 65x65x2.5mm SHS (three horizontal rails)
Gate slide-bolt hardware	Lokk Latch (key lockable); or Heavy duty Ø20mm slide bolt with Broadhurst Lockbox. Slide bolt is lockable in both the open and closed positions. Optional extra: Perforated mesh to cover climbing points.
Gate drop-bolt hardware	Heavy duty Ø16mm x 900mm drop bolt (pad lockable).
Gate hinging	Goliath ball bearing hinge (bottom) and double butt hinge (top); or Recommended alternative: Greasable tapered roller bearing (bottom) and sealed ball bearing hinging (top).
Gate posts	100x100x5mm (3000mm long) for openings up to 4800mm. 150x150x5mm (3000mm long) for openings of 4800-6000mm.
Post cap	Steel cap (powder coated)
Weld type	All welds are Silicon bronze which has superior corrosion resistance to a standard mild steel weld.
Zinc coating	Pre-galvanised precision tube with a zinc coating mass of 275 g/m ² across the internal and external surfaces of the hollow steel tube.
Higher corrosion environments	We would recommend the use of our zinc-rich epoxy primer under the top coat to give much greater corrosion resistance.
Post footing	Fence posts Ø300mm x 900mm deep using 20mpa concrete. Gate posts Ø450mm x 900mm deep using 20mpa concrete.



Demonstrating the tighter picket space



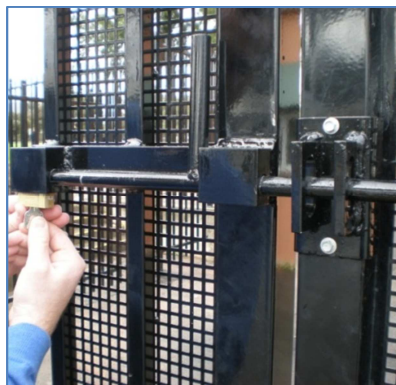
Space between pickets is 90mm



Goliath ball-bearing hinge



Greasable tapered roller bearing hinge



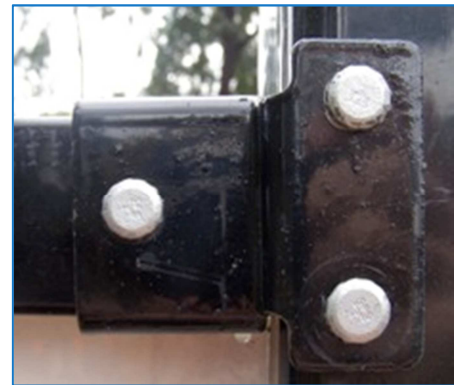
Broadhurst lockbox and slide bolt



Ø16mm x 900mm drop bolt



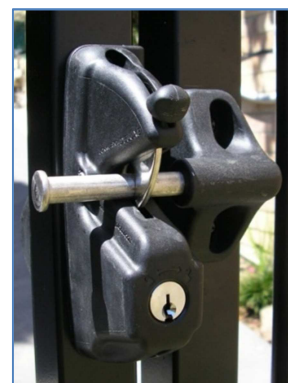
Shroud and Coloured Tek screw



1 piece heavy duty security bracket and
Tamper proof Irius Tek screw



Lokk Latch (External; key lockable)



Lokk Latch (Internal; key lockable)